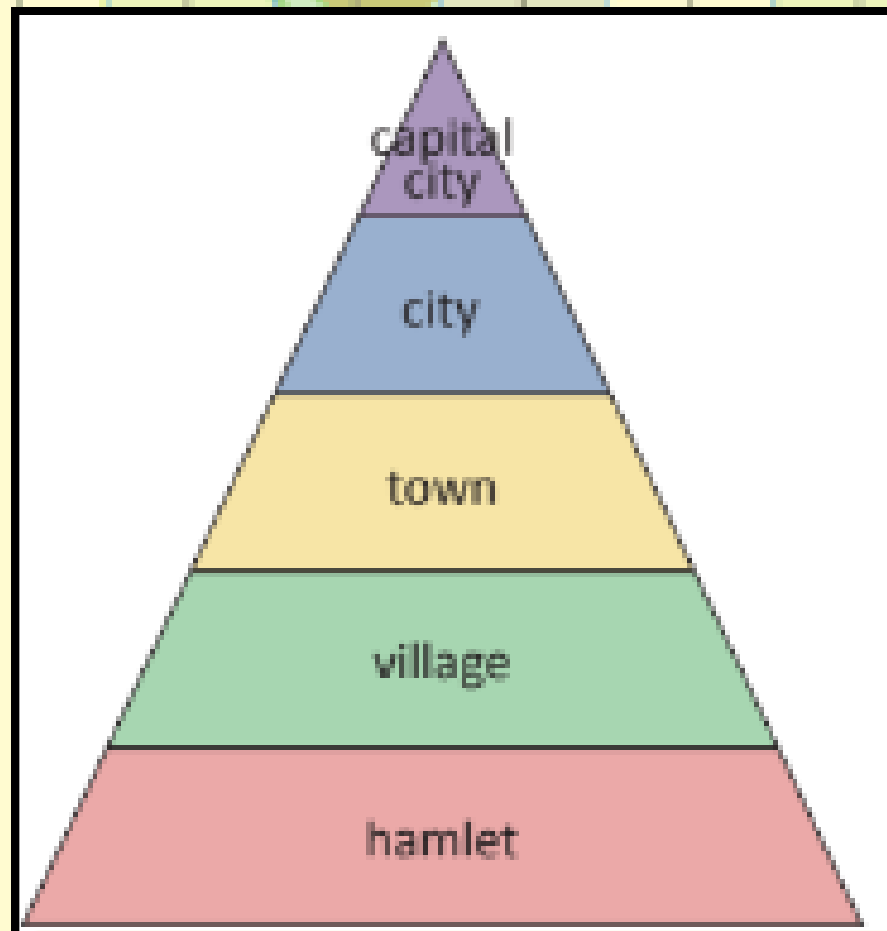


INVESTIGATING OUR WORLD

Glossary

climate	The general weather conditions found in a place over a period of time.
ecosystem	An environment, including the plants and animals that live and interact within that environment.
life expectancy	The number of years that a person is likely to live.
population density	The number of people living in an area.
topography	The physical appearance of an area of land, especially relating to its shape and surface.



Settlement Hierarchy



Cracking a map!

How to understand what the lines all mean...

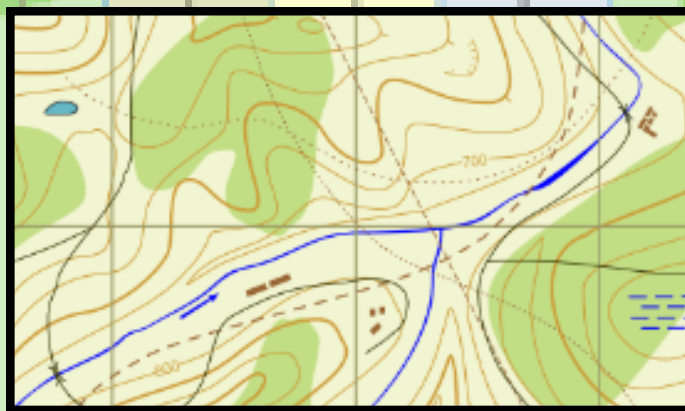
Ordnance Survey: Britain's mapmakers create these special maps.

Lines = Land: The squiggly lines show hills and mountains.

Close lines = steep climb!

Far apart lines = gentle slope or flat land.

Circles = the tippy-top of a hill or mountain!



Climate Zones

- **Polar:** The coldest – think snow and ice!
- **Temperate:** Warm summers and cool winters, perfect for four seasons of fun!
- **Mediterranean:** Hot, dry summers and mild, rainy winters
- **Desert:** The hottest! Think lots of sand and cacti.
- **Tropical:** Hot and rainy all year round – perfect for rainforests!
- **High Altitude:** The higher you go, the colder it gets!

Vegetation Belts

- **Desert:** Hot and dry, with cacti and other tough plants.
- **Forest:** Lots of trees, perfect for hiding and exploring!
- **Grassland:** Big, open fields with tall grasses – great for grazing animals!
- **Ice Sheet:** Covered in ice and snow, super cold! ❄️
- **Tundra:** Cold and wet, with short plants and mosses.
- **Biomes:** Imagine a giant habitat – that's a biome! Plants and animals live together depending on the climate:
- **Aquatic:** Oceans, lakes, rivers
- **Desert:** Hot and dry, with special plants and animals that can survive the heat.
- **Forest:** Lots of trees, home to all sorts of cool creatures!
- **Grassland:** Open fields with grazing animals and hidden critters.
- **Tundra:** Cold and wet, with unique plants and animals adapted to the chill.